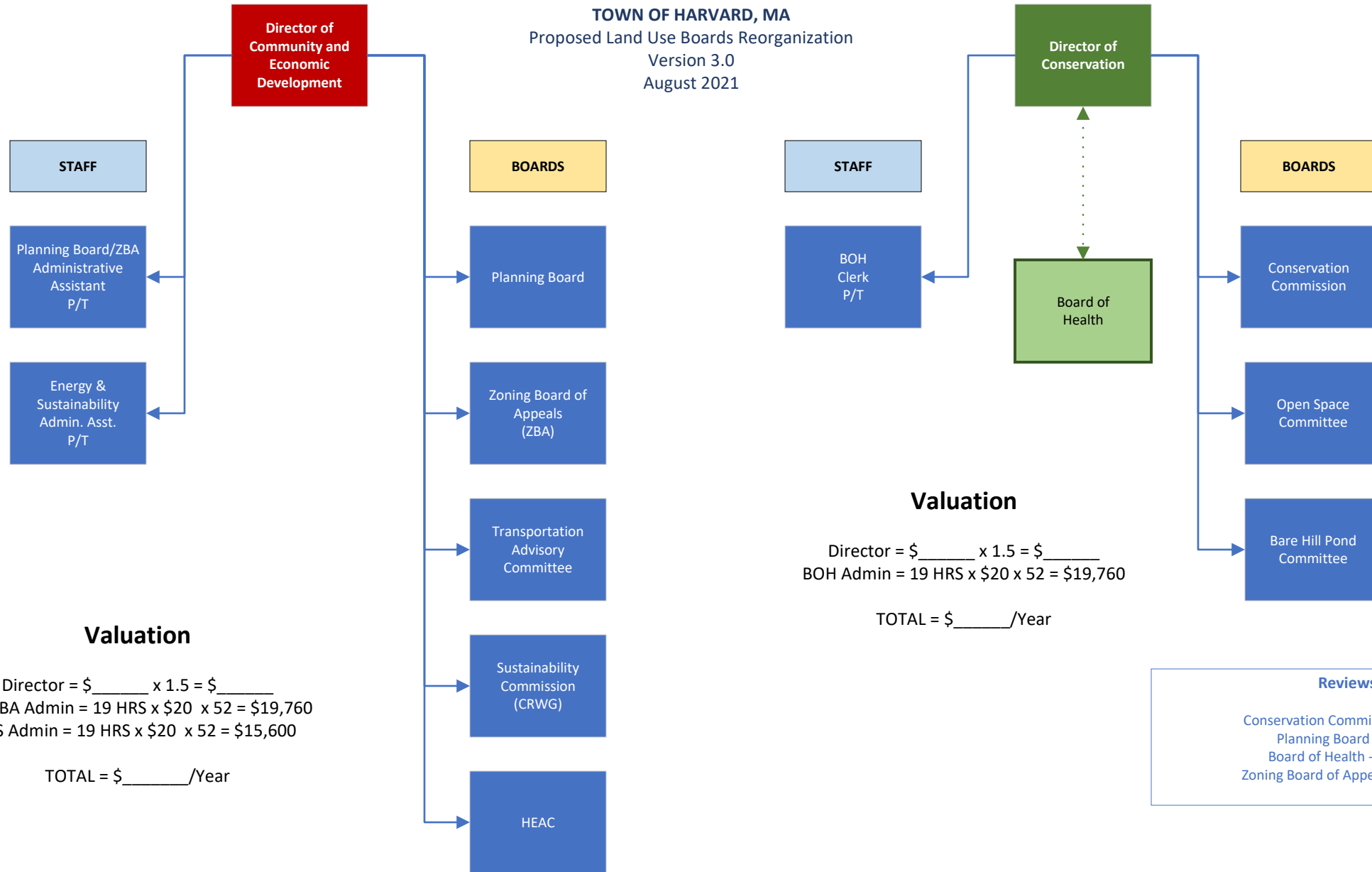


TOWN OF HARVARD, MA
 Proposed Land Use Boards Reorganization
 Version 3.0
 August 2021



Valuation

Director = \$ _____ x 1.5 = \$ _____
 PB/ZBA Admin = 19 HRS x \$20 x 52 = \$19,760
 E/S Admin = 19 HRS x \$20 x 52 = \$15,600
 TOTAL = \$ _____/Year

Valuation

Director = \$ _____ x 1.5 = \$ _____
 BOH Admin = 19 HRS x \$20 x 52 = \$19,760
 TOTAL = \$ _____/Year

Reviews

Conservation Commission - DONE
 Planning Board - DONE
 Board of Health - Pending
 Zoning Board of Appeals - Pending