

EROSION AND SEDIMENT CONTROL REQUIREMENTS

PART 1 – GENERAL

- 1.01 SUMMARY
- A. FURNISH, INSTALL, AND MAINTAIN TEMPORARY AND PERMANENT EROSION AND SEDIMENT CONTROL MEASURES, SUCH AS, BUT NOT NECESSARILY LIMITED TO, HAY BALE AND SILT FENCE BARRIERS, RIPRAP, DIVERSION CHANNELS AND BERMS, VEHICLE TRACKING PAD, EROSION CONTROL BLANKETS, INLET PROTECTION DEVICES, CHECK DAMS, STRATEGICALLY LOCATED AND PROTECTED STOCKPILES, SEDIMENT BASINS, MULCH, AND SEED MIX (HEREINAFTER "CONTROL MEASURES") ADEQUATE TO PREVENT THE CONVEYANCE OF SEDIMENT LADEN RUNOFF FROM SITE, OR INTO ENVIRONMENTALLY SENSITIVE AREAS, OR INTO AREAS WHERE WORK WILL BE ADVERSELY IMPACTED. ENVIRONMENTALLY SENSITIVE AREAS INCLUDE, BUT ARE NOT NECESSARILY LIMITED TO, WETLANDS, TRIBUTARIES TO WETLANDS, WETLAND BUFFER ZONES, INTERMITTENT AND PERENNIAL STREAMS / RIVERS, AND THEIR ATTENDANT BUFFER ZONES.
1. REFER TO DRAWINGS FOR LOCATION AND DETAILS OF CONTROL MEASURES REQUIRED TO COMMENCE WORK. THESE CONTROL MEASURES WILL BE ADEQUATE ONLY FOR VEGETATION CLEARING. THE DRAWINGS ARE NOT INTENDED TO GRAPHICALLY DEPICT ALL CONTROL MEASURES THAT WILL BE REQUIRED TO MEET THE REQUIREMENTS OF SECTION 1.01.A ABOVE.
2. DEVISE AND EMPLOY CONTROL MEASURES THROUGHOUT THE DURATION OF PROJECT, OVER ALL AREAS DISTURBED OR UNDISTURBED BY CONSTRUCTION, AS NECESSARY TO MEET THE REQUIREMENTS OF SECTION 1.01.A ABOVE.
3. DEVISE AND EMPLOY TEMPORARY CONTROL MEASURES AS NECESSARY TO MEET THE REQUIREMENTS DESCRIBED IN SECTION 1.01.A ABOVE, WHILE ALLOWING WORK TO PROCEED IN AN EFFICIENT, COST EFFECTIVE MANNER.
4. DEVISE, EMPLOY AND MAINTAIN CONTROL MEASURES UNTIL SUCH TIME AS THE ENTIRE SITE IS PERMANENTLY STABILIZED BY ESTABLISHED VEGETATION, FINISH LANDSCAPE MATERIALS, PAVED SURFACES, AND/OR ROOF AREA.
5. ONCE THE SITE IS PERMANENTLY STABILIZED AND CERTIFIED AS SUCH BY ENGINEER, REMOVE TEMPORARY CONTROL MEASURES WHILE PROTECTING STABILIZED SURFACES.
- 1.02 SUBMITTALS
- A. SUBMIT PRODUCT DATA, WARRANTY, AND TEST REPORTS FOR PRODUCTS AS INDICATED ON THE DRAWINGS.
- 1.03 QUALITY ASSURANCE
- A. COMPLY WITH GOVERNING CODES AND REGULATIONS. PROVIDE PRODUCTS FROM ACCEPTABLE MANUFACTURERS. USE EXPERIENCED INSTALLERS. DELIVER, HANDLE, AND STORE MATERIALS IN ACCORDANCE WITH MANUFACTURER'S INSTRUCTIONS.
- B. CONFORM TO CONDITIONS OF APPROVAL ISSUED BY REGULATORY AGENCIES INCLUDING, BUT NOT NECESSARILY LIMITED TO, LOCAL PLANNING BOARD, CONSERVATION COMMISSION, BOARD OF SELECTMEN, BOARD OF HEALTH, PUBLIC WORKS / HIGHWAY DEPARTMENT, STATE ENVIRONMENTAL PROTECTION DEPARTMENT, AND U.S. GOVERNMENT, ENVIRONMENTAL PROTECTION AGENCY. WHERE CONDITIONS OF REGULATORY APPROVAL DIFFER FROM REQUIREMENTS CONTAINED HEREIN OR ON THE DRAWINGS, COMPLY WITH THE MORE STRINGENT REQUIREMENT.

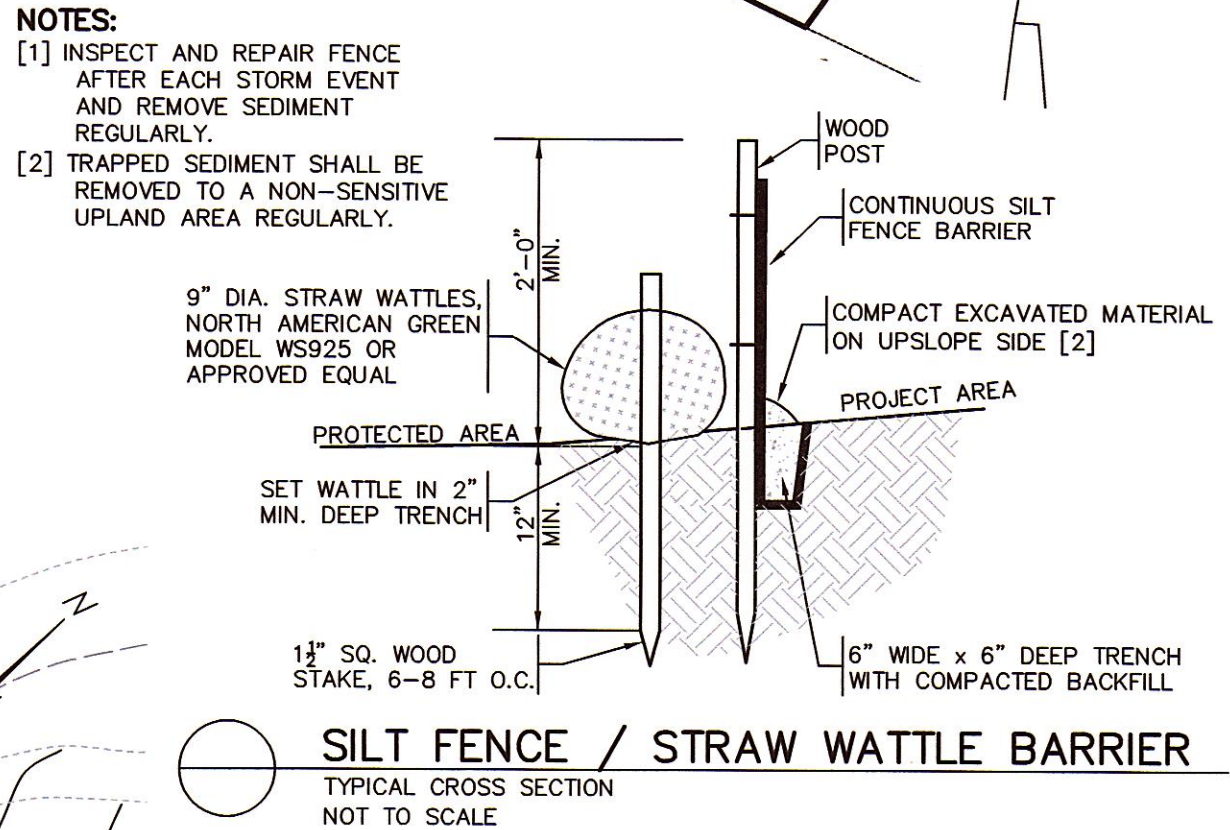
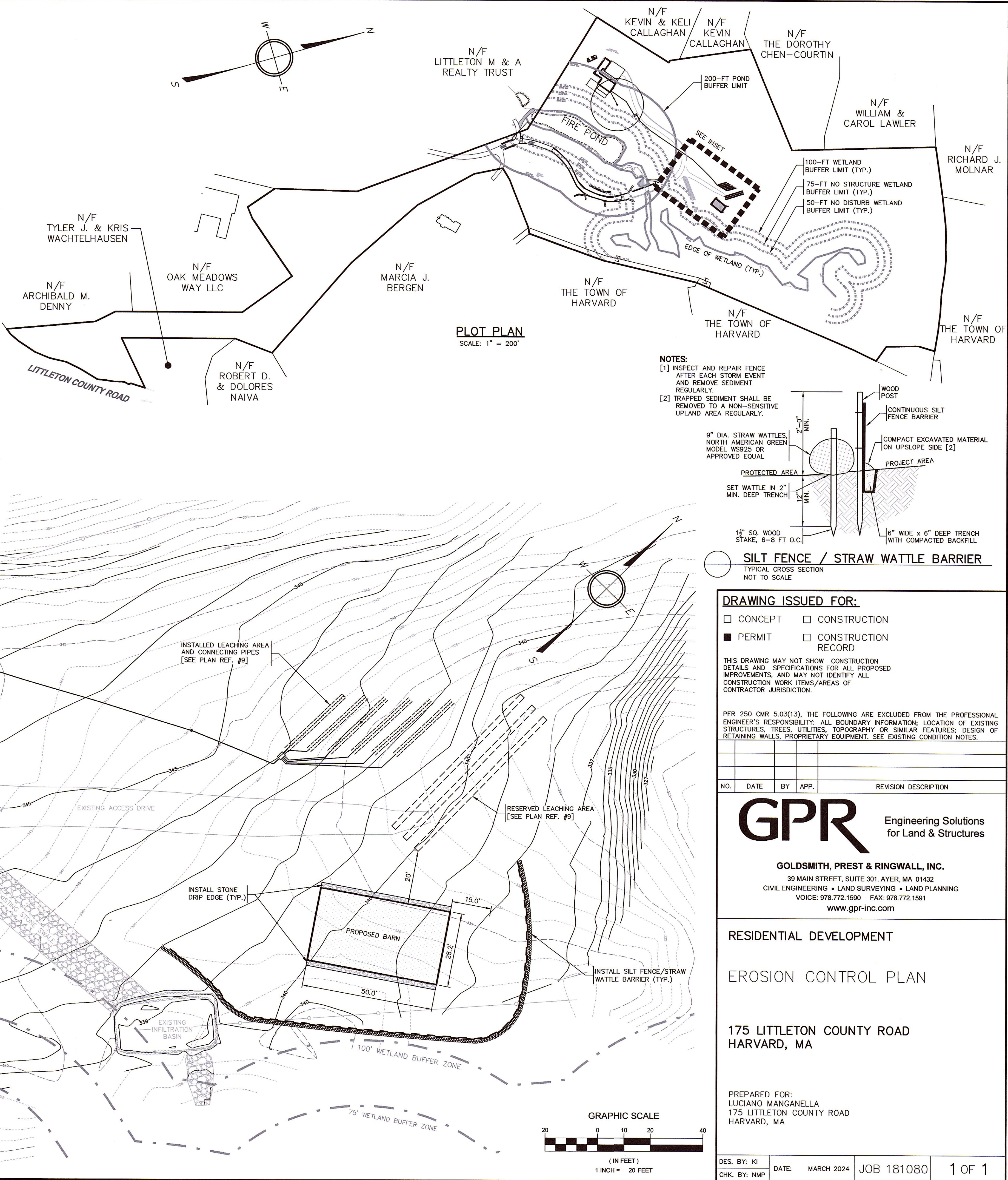
PART 2 – PRODUCTS

- 2.01 MATERIALS
- A. HAY/STRAW BALES: WEED AND SEED FREE DRY GRASS OR STRAW, MACHINE BOUND WITH JUTE OR WIRE, APPROXIMATE SIZE EACH BALE 42" X 16" X 16".
- B. PRE-FABRICATED SEDIMENT FENCE: WOVEN OR MONOFILAMENT GEOTEXTILE; UV-RESISTANT; POLYPROPYLENE OR POLYESTER; MINIMUM GRAB TENSILE OF 124 LBS; WATER PERMITIVITY BETWEEN 0.1 SEC⁻¹ AND 0.15 SEC⁻¹; SLURRY FLOW RATE OF 0.3 GAL/SF/MIN; MINIMUM 1"x1" HARDWOOD STAKES WITH INTEGRAL STAKE LOOPS AND STAPLED; APPROVED MANUFACTURERS: NILEX, PROPEX AND MIRAFI OR APPROVED EQUAL.
- C. MULCH: ORGANICS INCLUDING STRAW, PROCESSED PINE / HEMLOCK TWIGS, NEEDLES, AND STUMP GRINDING.
- D. SEED MIXES: PERENNIAL RYEGRASS, KENTUCKY BLUEGRASS, AND / OR FINE FESCUE, DISEASE RESISTANT. NON-MAINTAINED AREA OPTION – ANNUAL RYEGRASS COMBINED WITH MEDIUM RED CLOVER. CONFIRM USE WITH ENGINEER.
- E. EROSION CONTROL EXCELSIOR BLANKET: CURLED WOOD FIBER ON PHOTODEGRADABLE EXTRUDED PLASTIC MATRIX, 80% OF FIBERS 6-INCHES LONG OR LONGER, WEIGHT 0.975 POUNDS / SY, CONTAINING NO CHEMICAL ADDITIVES. APPROVED MANUFACTURERS: NORTH AMERICAN GREEN, AND PROPEX OR APPROVED EQUAL.
- F. ROCK RIPRAP: SOUND, ANGULAR, 6-INCH MINUS PROCESSED ROCK, BLAST ROCK, OR TAILINGS.
- G. CRUSHED STONE: SOUND, ANGULAR, 2-INCH MINUS PROCESSED CRUSHED STONE

PART 3 – EXECUTION

- 3.01 THROUGHOUT CONSTRUCTION
- A. DEVISE WORK SEQUENCE SO AS TO LIMIT DRAINAGE AREA THAT IS TRIBUTARY TO DISTURBED AREAS. DEVISE, EMPLOY, AND MAINTAIN CONTROL MEASURES SUCH AS DIVERSION CHANNELS AND BERMS, STRATEGICALLY LOCATED STOCKPILES, AND SEDIMENT BASINS TO SUBDIVIDE DRAINAGE AREAS INTO SMALL, MANAGEABLE SUBAREAS, THEREBY MINIMIZING RUNOFF AND THE POTENTIAL FOR EROSION.
- B. MAINTAIN BARRIER AT LIMIT OF WORK AND PROTECT EXISTING VEGETATION / FACILITIES OUTSIDE OF LIMIT OF WORK.
- C. MAINTAIN SPARE MATERIAL STOCKPILES FOR IMMEDIATE EMPLOYMENT / REPAIR / EXPANSION OF CONTROL MEASURES. AT A MINIMUM, SUCH MATERIALS SHALL INCLUDE HAY BALES, SILT FENCE AND STAKES, AND CRUSHED STONE.
- D. INSPECT AND MAINTAIN EFFECTIVENESS OF CONTROL MEASURES BY REPAIRING AS NECESSARY TO ENSURE INTENDED FUNCTION; BY SUPPLEMENTING AS NECESSARY TO MAINTAIN EFFECTIVE TRAP VOLUME.
- E. LIMIT EXTENT OF WORK AREA SO THAT ALL DISTURBED AREAS CAN BE STABILIZED WITH CONTROL MEASURES WITHIN A 24-HOUR PERIOD.
- F. INSTALL CONTROL MEASURES AS SOON AS PRACTICABLE AFTER EACH MANAGEABLE PORTION OF EARTHWORK IS COMPLETE. EMPLOY TEMPORARY MEASURES AS NECESSARY TO STABILIZE DISTURBED AREAS, EVEN WHERE SUBSEQUENT CONSTRUCTION OPERATIONS MAY REQUIRE RE-DISTURBANCE.
- G. WHEN INTENSE RAINFALL IS EXPECTED, CONSIDER, DEVISE, AND EMPLOY REINFORCING CONTROL MEASURES PRIOR TO THE RAINFALL EVENT TO MEET THE REQUIREMENTS DESCRIBED IN SECTION 1.01.A ABOVE. IF NECESSARY, EMPLOY TEMPORARY CONTROL MEASURES ON MATERIAL STOCKPILES TO COUNTERACT POTENTIAL SEDIMENT TRANSPORT DURING INTENSE RAINFALL.

- H. WHEN VEHICLE REFUELING IS REQUIRED ON SITE, CONDUCT REFUELING OPERATIONS OUTSIDE OF ENVIRONMENTALLY SENSITIVE AREAS AND WITHIN AN AREA THAT IS CONTAINED BY A BEST MANAGEMENT PRACTICE. A PORTABLE SPILL KIT SHALL BE KEPT ONSITE AT ALL TIMES.
- I. PROPERLY DISPOSE OF DEBRIS, SOLID WASTE, TRASH, AND CONSTRUCTION WASTE / BYPRODUCTS OFF SITE. KEEP TRASH BINS/DUMPSTERS COVERED AT ALL TIMES.
- J. SWEEP ON-SITE PAVED AREAS AND OFF-SITE STREETS AS NECESSARY TO PREVENT SILT AND DEBRIS ORIGINATING ON SITE FROM ENTERING CLOSED DRAINAGE SYSTEMS AND / OR ENVIRONMENTALLY SENSITIVE AREAS.
- 3.02 SITE PREPARATION AND ACCESS
- A. WALK SITE AND IDENTIFY LOCATIONS OF LIMIT OF WORK AND ENVIRONMENTALLY SENSITIVE AREAS. ESTABLISH CONSTRUCTION STAGING AREA, LOCATED BEYOND ENVIRONMENTALLY SENSITIVE AREAS.
- B. INSTALL CONTROL MEASURES AS SHOWN ON THE DRAWINGS, INCLUDING THOSE DEFINING THE LIMIT OF WORK.
- C. LIMIT VEHICULAR TRAFFIC TO AND FROM SITE TO MINIMIZE TRANSPORT OF SEDIMENTATION.
- 3.03 CLEARING, GRUBBING, AND STRIPPING
- A. SCHEDULE GRUBBING AND STRIPPING TO OCCUR IMMEDIATELY PRIOR TO EARTH DISTURBANCE. DEPENDING ON SITE AREA, CONSIDER MULTIPLE GRUBBING PHASES, SEQUENCED TO TAKE ADVANTAGE OF THE EROSION PREVENTION POTENTIAL OF EXISTING VEGETATIVE COVER.
- B. MINIMIZE THE AREA OF EXISTING VEGETATION REMOVED WHEREVER POSSIBLE.
- C. LOCATE AND SIZE STOCKPILES TO MINIMIZE EROSION POTENTIAL, TAKING ADVANTAGE OF TERRAIN SLOPE AND ASPECT, WHERE APPROPRIATE.
- D. PROTECT VEGETATION, INCLUDING ROOT SYSTEMS, BEYOND LIMIT OF CLEARING.
- E. PROCESS TIMBER, STUMPS, SLASH, AND BRUSH SO AS TO PROTECT ENVIRONMENTALLY SENSITIVE AREAS AND INSTALLED CONTROL MEASURES. PROPERLY DISPOSE OF EXCESS OFF SITE. BURIAL OF STUMPS ON SITE IS PROHIBITED.
- 3.04 EXCAVATION FOR BUILDING FOUNDATIONS AND UTILITIES
- A. DEVISE AND INSTALL CONTROL MEASURES ADEQUATE TO HANDLE DISCHARGES AND TRAP SEDIMENT FROM FOOTING SUMP AND WELL POINT PUMPS PRIOR TO EXCAVATION.
- B. ARMOR SUMP PUMP DISCHARGE LOCATIONS TO PREVENT EROSION AT POINT OF DISCHARGE AND AREAS DOWNSTREAM.
- C. IF FOUNDATION EXCAVATIONS GRADE TO DAYLIGHT ON THE LOW SIDE, DEVISE AND INSTALL CONTROL MEASURES TO HANDLE SURFACE AND GROUNDWATER FLOW FROM EXCAVATION LOW POINT.
- D. STOCKPILE EXCAVATED MATERIALS TO BAFFLE OVERLAND RUNOFF, AVOIDING THE CREATION OF LENGTHY PATHS OF CONCENTRATED RUNOFF.
- E. BACKFILL UTILITY TRENCHES AS SOON AS PRACTICABLE TO PREVENT FLOODING, SLOUGHING, POTENTIAL OVERFLOW, AND REPETITIVE EARTH DISTURBANCE.
- 3.05 SITE GRADING
- A. WHERE APPLICABLE, FOLLOW EXCAVATION AND FILL PRACTICES SHOWN ON DRAWINGS TO LOCALIZE AND MINIMIZE SEDIMENT TRANSPORT.
- B. MONITOR SEDIMENTATION VOLUME IN TEMPORARY SEDIMENT BASINS AND AT DIVERSION BERMS AND CHECK DAMS. IN ALL AREAS EXCEPT THOSE THAT DO NOT PRESENT POTENTIAL PROBLEMS WITH REGARD TO FUTURE SOIL STABILITY, DRAINAGE, OR BEARING CAPACITY, REMOVE AND PROPERLY DISPOSE OF TRAPPED SEDIMENTATION BEFORE BRINGING SITE TO FINAL SUBGRADE.
- C. IF SEDIMENTATION IS DISPOSED ONSITE, IT SHALL BE DEPOSITED IN AREAS WHERE RUNOFF CANNOT RE-TRANSPORT DOWNSTREAM.
- 3.06 STORMWATER MANAGEMENT SYSTEM
- A. THE STORMWATER MANAGEMENT SYSTEM INCLUDES, BUT IS NOT NECESSARILY LIMITED TO, ALL PERMANENT DETENTION / RETENTION BASINS, DISCHARGE STRUCTURES / WEIRS, CULVERTS, OPEN CHANNELS, CURBS, GUTTERS, PAVED SWALES, CATCH BASINS, DRAIN MANHOLES, DRAINAGE PIPES, ROOF DRAIN MANIFOLDS, WATER QUALITY SWALES, SEPARATORS, AND SIMILAR STORMWATER RUNOFF CONVEYANCE, TREATMENT, AND STORAGE FACILITIES.
- B. INSTALL STORMWATER MANAGEMENT SYSTEM COMPONENTS STARTING AT THE DOWNSTREAM END AND PROCEED UPSTREAM, WHERE POSSIBLE, COMPLETE INSTALLATION OF PERMANENT DETENTION / RETENTION BASINS PRIOR TO BEGINNING WORK ON UPSTREAM SYSTEM COMPONENTS.
- C. INSTALL CONTROL MEASURES AT FINISHED UPSTREAM AND DOWNSTREAM PIPE ENDS AS SOON AS POSSIBLE AFTER COMPLETION OF PIPE RUN. SUCH MEASURES INCLUDE, BUT ARE NOT NECESSARILY LIMITED TO, RIPRAP, CHECK DAMS, HAY BALE / SILT FENCE BARRIERS, AND VELOCITY DISSIPATORS.
- D. AT THE END OF EACH DAY OR WHEN RAINFALL IS EXPECTED, PLUG UPSTREAM END OF PIPES / DAM OPEN CHANNELS OR OTHERWISE REDIRECT POTENTIAL RUNOFF AND PREVENT FLOW FROM ENTERING PARTIALLY COMPLETED SYSTEM / SYSTEM COMPONENTS.
- E. WHERE PORTIONS OF A NEW SYSTEM ARE TO BE ACTIVATED PRIOR TO COMPLETION OF THE ENTIRE SYSTEM, EMPLOY CONTROL MEASURES TO PREVENT SEDIMENT LADEN RUNOFF AND DEBRIS FROM ENTERING THE SYSTEM. EMPLOY SILT SACKS OR FABRIC ON CATCH BASIN INLETS, AND PIPE AND CULVERT OPENINGS. EMPLOY CHECK DAMS AND TEMPORARY SEDIMENT BASINS UPSTREAM OF AND ALONG OPEN CHANNELS, SWALES, AND DITCHES TO TRAP SEDIMENT UPGRADIENT OF ENVIRONMENTALLY SENSITIVE AREAS.
- F. REMOVE TRAPPED SEDIMENTATION AND DEBRIS FROM ALL SYSTEM COMPONENTS AFTER COMPLETION OF INSTALLATION, AND AGAIN AFTER THE ENTIRE SITE IS PERMANENTLY STABILIZED BY ESTABLISHED VEGETATION, FINISH LANDSCAPE MATERIALS, PAVED SURFACES, AND/OR ROOF AREA. REMOVE TRAPPED SEDIMENTATION AND DEBRIS FROM DETENTION / RETENTION BASIN BOTTOMS SO THAT FINISH BOTTOM MATERIALS / INFILTRATION FUNCTION CONFORM TO DESIGN.
- 3.07 LANDSCAPING
- A. COMPLETE LANDSCAPING AS SOON AS POSSIBLE AFTER COMPLETION OF FINAL SUBGRADE.
- B. IMMEDIATELY AFTER PLACEMENT OF TOPSOIL, STABILIZE WITH CONTROL MEASURES INCLUDING, BUT NOT NECESSARILY LIMITED TO, SEED MIX, MULCH, AND / OR BLANKET.



DRAWING ISSUED FOR:

- ☐ CONCEPT ☐ CONSTRUCTION
- ☒ PERMIT ☐ CONSTRUCTION RECORD

THIS DRAWING MAY NOT SHOW CONSTRUCTION DETAILS AND SPECIFICATIONS FOR ALL PROPOSED IMPROVEMENTS, AND MAY NOT IDENTIFY ALL CONSTRUCTION WORK ITEMS/AREAS OF CONTRACTOR JURISDICTION.

PER 260 CMR 5.03(13), THE FOLLOWING ARE EXCLUDED FROM THE PROFESSIONAL ENGINEER'S RESPONSIBILITY: ALL BOUNDARY INFORMATION; LOCATION OF EXISTING STRUCTURES, TREES, UTILITIES, TOPOGRAPHY OR SIMILAR FEATURES; DESIGN OF RETAINING WALLS, PROPRIETARY EQUIPMENT. SEE EXISTING CONDITION NOTES.

NO.	DATE	BY	APP.	REVISION DESCRIPTION

GPR Engineering Solutions for Land & Structures

GOLDSMITH, PREST & RINGWALL, INC.
39 MAIN STREET, SUITE 301, AYER, MA 01432
CIVIL ENGINEERING • LAND SURVEYING • LAND PLANNING
VOICE: 978.772.1590 FAX: 978.772.1591
www.gpr-inc.com

RESIDENTIAL DEVELOPMENT

EROSION CONTROL PLAN

175 LITTLETON COUNTY ROAD
HARVARD, MA

PREPARED FOR:
LUCIANO MANGANELLA
175 LITTLETON COUNTY ROAD
HARVARD, MA

DES. BY: KI	DATE: MARCH 2024	JOB 181080	1 OF 1
CHK. BY: NMP			