

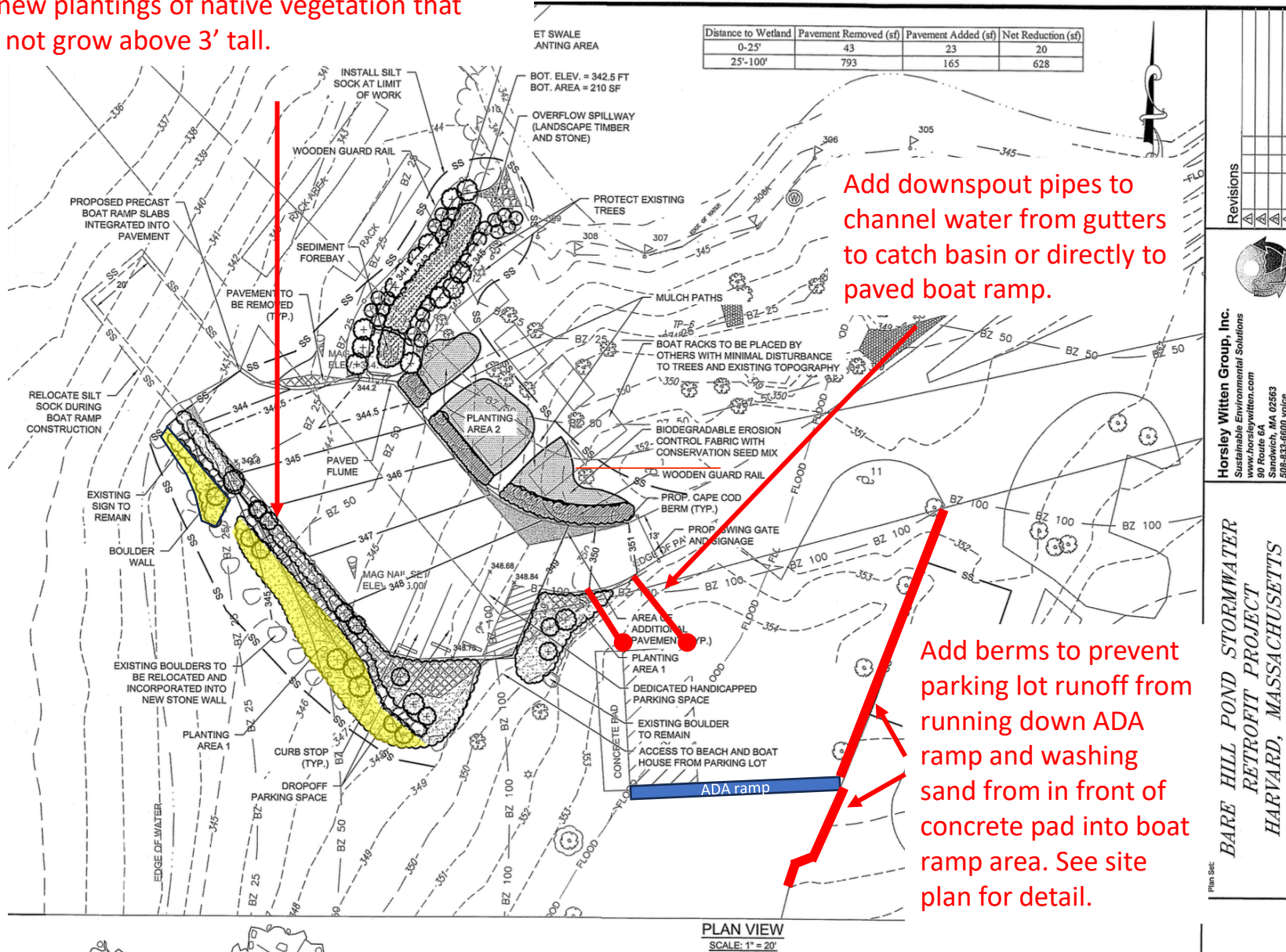
Harvard Town Beach Improvements

**Respectfully submitted by the Interim Recreation Director / Harbormaster
July 20th, 2023**

**Revised with Landscape and ADA plans
Respectfully submitted by Recreation Director
April 4, 2024**

Town Beach Improvements

Add new plantings of native vegetation that does not grow above 3' tall.



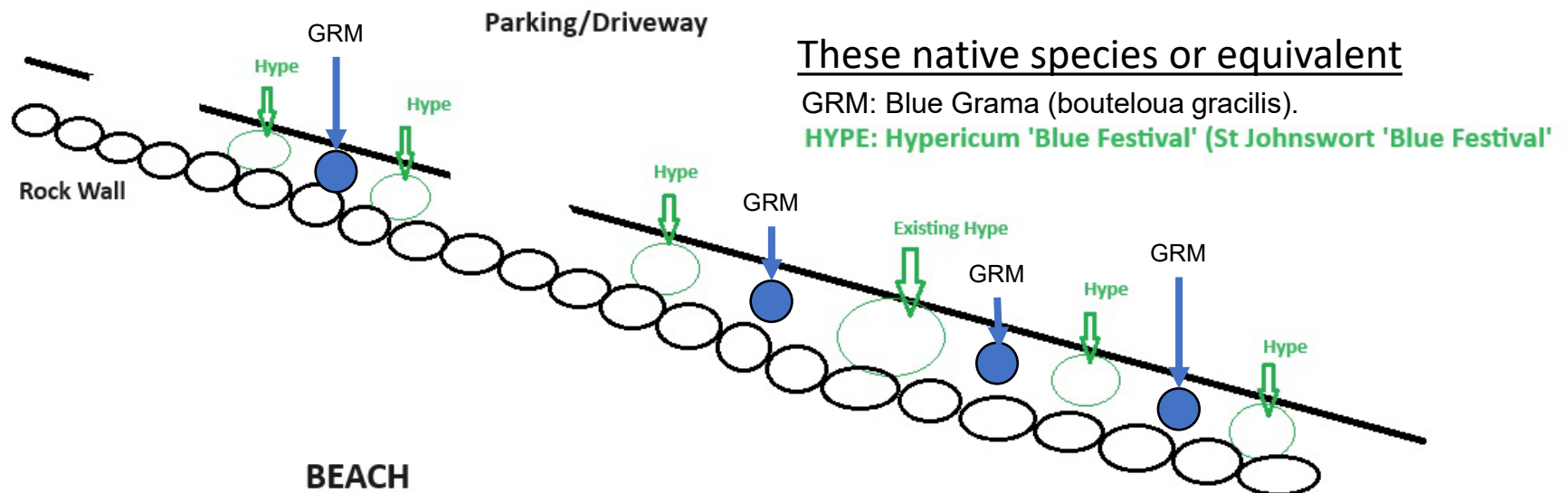
Revisions

Horsley Witten Group, Inc.
Sustainable Environmental Solutions
www.horsleywitten.com
90 Route 6A, 02563
Sandwich, MA
508-833-6600 voice

BARE HILL POND STORMWATER
RETROFIT PROJECT
HARVARD, MASSACHUSETTS

New Landscape plan for area between stone wall and boat ramp

Beach House



ADA Changes

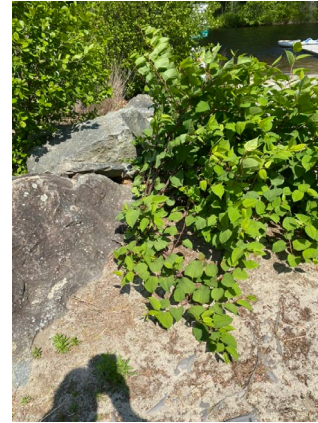
Town Beach Improvements



See site plan for parking lot & drainage detail.

Backup

Town Beach Improvements



Vegetation between stone wall and boat ramp consisted of one flowering bush and invasives including Japanese knotweed and Barberry.

Flowering bush left and all invasives removed. Plan is to plant native plants that do not grow more than 3 feet tall. Double ground wood chips refreshed in parking lot islands and boat ramp planting areas.



Town Beach Maintenance Changes

Video showing source of sand on pavement of boat ramp as runoff from and around beach house.



Maintenance required after each rainstorm to prevent twisted ankles.



Sandbags added to simulate berm. Positive effect.

