

FIELD REPORT

Nitsch Project #:	12808	Date:	November 6, 2019
Client:	Pine Hill Village, LLC	Time:	9:30 AM
Project:	Pine Hill Development	Location:	Harvard, Massachusetts
Weather:	Clear, 35°F		
Present:	Brittney Veeck, PE, Nitsch Engineering Chanel Jackson, Nitsch Engineering Gavin Graham, Nitsch Engineering Liz Allard, Town of Harvard Ronald Richie, Town of Harvard Peter Cricones, PC Building LLC		

The purpose of the site visit was to establish an understanding of the site conditions and observe sedimentation controls at the Pine Hills Village development. The following was noted during the site visit:

1. Nitsch Engineering observed the construction entrance to the site and found that the stone appeared to be in accordance with the Contract Documents (**Figure 1**). Nitsch Engineering will continue to observe the construction entrance in future site visits to ensure there is no buildup of sediment on the gravel entrance and that no sediment tracking occurs onto the public way.
2. Nitsch Engineering observed sedimentation fences and noted that the configuration of the fences generally aligned with what was shown on the plan. (**Figure 2**).

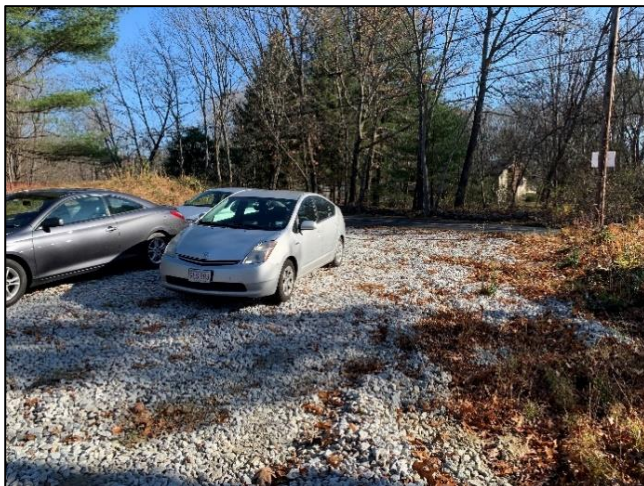


FIGURE 1



FIGURE 2

3. Nitsch Engineering noted the location of an intermittent stream on site, Nitsch recommends that additional erosion control measure should be used to protect the bank when the culvert replacement occurs and to protect sediment from entering the stream during construction. (**Figure 3**).
4. Nitsch Engineering noted areas of concern where slope stabilization will need to be implemented once the site is cleared (**Figure 4**).



FIGURE 3



FIGURE 4

5. Nitsch Engineering observed clearing had begun. The Harvard Conservation Commission requested the Contractor stop tree clearing until Nitsch Engineering was brought on board. Nitsch will monitor the extent of the removal of trees per the approved plan sheets. Nitsch Engineering understands that stumps are to be left intact until construction in that specific area begins.
6. Nitsch Engineering asked about the procedure in place for the Design Engineer to review submittals. PC Building is not planning to submit product submittals to Geosyntec for review unless a material other than what is shown on the plans is proposed. Nitsch Engineering recommends that Geosyntec review all submittals of products prior to installation of the product.
7. Nitsch Engineering notes that the contractor is expected to provide an outline of their anticipated work schedule in an e-mail to the Zoning Board Administrator / Conservation Agent (Ms Allard) for the following week every Friday. They will provide this schedule directly to Ms. Allard who will forward it to Nitsch Engineering.

Past Recommended Items to be Completed

- N/A

New Recommended Items to be Completed

- Provide a sketch or updated Phase drawing to reflect the change in Phasing locations.
- Recommend that the Engineer of Record review and approve product submittals for the site work.

Gavin Graham
Project Designer

SV

cc: Bolton Zoning Board if Appeals
Bolton Conservation Commission

\\jnei.local\DFS\10000-11999\12808 Pine Hill 40B\Civil\CA\Field Reports\2019-11-06\12808 - Initial Site Visit 2019-11-06.docx